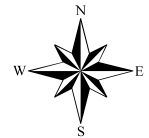
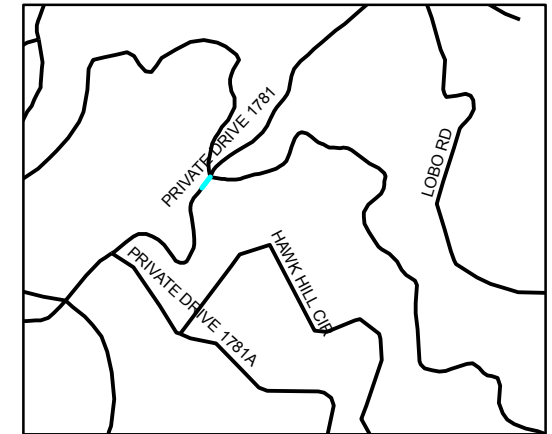
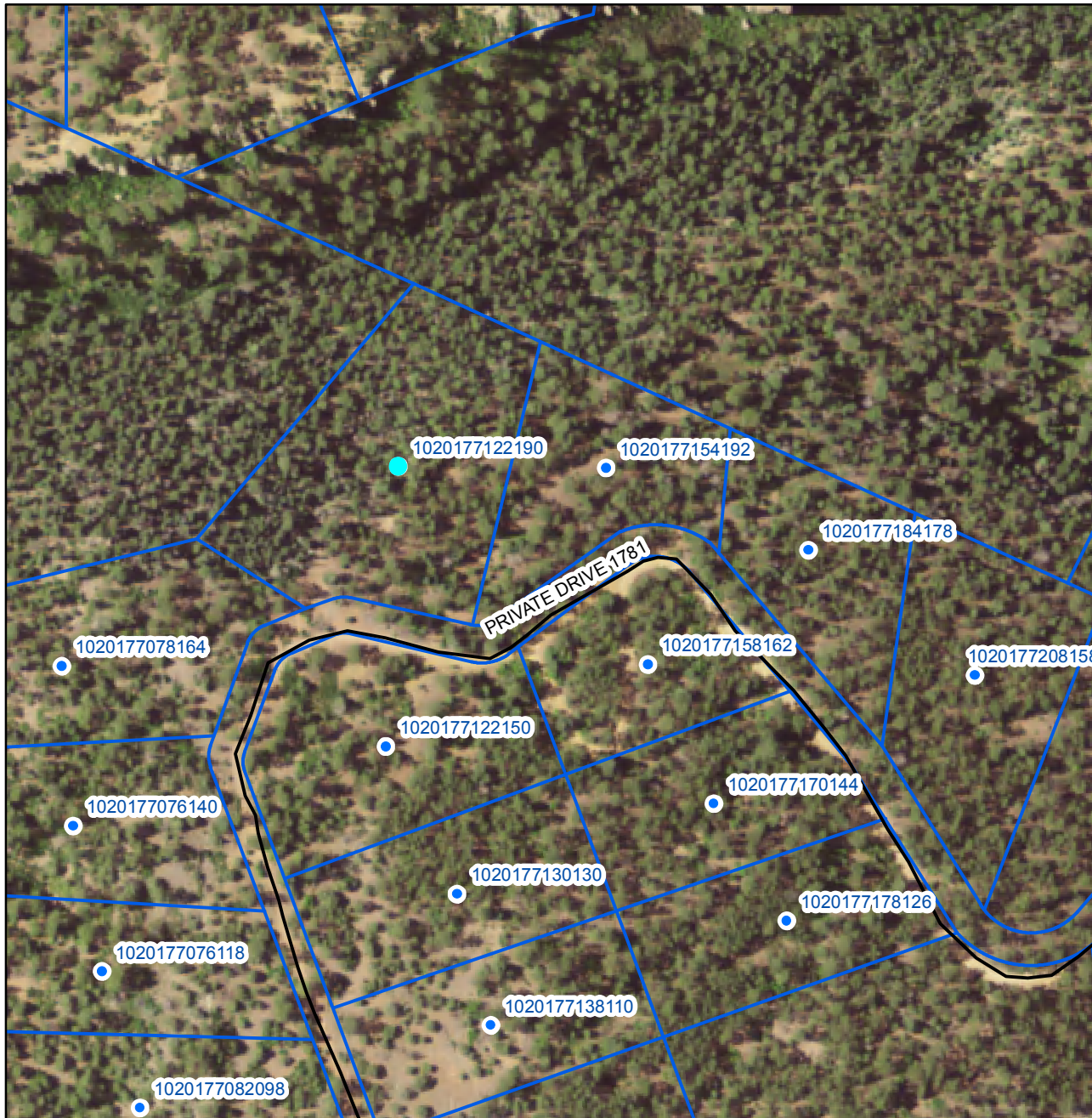


# UPC 1020177122190 PONDEROSA SUBD UNIT 7, TR. 112



RIO ARRIBA COUNTY ASSESSOR'S OFFICE  
LEVI VALDEZ JR., ASSESSOR  
MAPPING/GIS DEPARTMENT  
1122 INDUSTRIAL PARK ROAD  
ESPANOLA, NEW MEXICO 87532  
(505) 753-7019

### DISCLAIMER

#### NOTE:

THIS MAP WAS PREPARED THROUGH THE USE OF INFORMATION IN ACCORDANCE WITH THE PROPERTY TAX CODE. ANY USE OR RECOMPILATION OF THIS DATA IS THE RESPONSIBILITY OF THE DATA USERS. USERS OF THE DATA ARE SOLELY RESPONSIBLE FOR VALIDATION AND VERIFICATION OF THE DATA. THIS INFORMATION SHALL NOT BE USED TO ESTABLISH BOUNDARY LINES OR LEGAL TITLE. THIS INFORMATION IS FOR EXPRESSLY DISCLAIMS ALL LIABILITY REGARDING ACCURACY OR COMPLETENESS OF THIS DATA FOR PURPOSES OTHER THAN TO MEET THE REQUIREMENTS OF THE PROPERTY TAX CODE.

PROPERTY LINES ARE PROVIDED BY THE RIO ARRIBA COUNTY ASSESSOR. NOTE PROPERTY LINES ARE IN ACCORDANCE WITH DEEDS OR SURVEYS. ALL COUNTY MAPS ARE FOR VISUAL USE ONLY AND ARE SUBJECT TO CHANGE.

MAP PROVIDED BY RIO ARRIBA COUNTY  
ASSESSOR'S OFFICE  
Created by B. GONZALES, Mapping Supervisor,  
April 21, 2015

ADDRESSING INFORMATION SHOWN HEREIN  
IS PROVIDED BY RIO ARRIBA COUNTY PLANNING  
AND ZONING DEPARTMENT OR THE CITY OF  
ESPANOLA PLANNING AND ZONING OR THE  
PUEBLO OF OHKAY OWINGEH.  
FOR FURTHER INFORMATION, PLEASE CONTACT  
THE APPROPRIATE ENTITY.